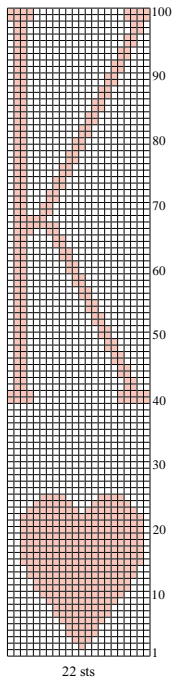
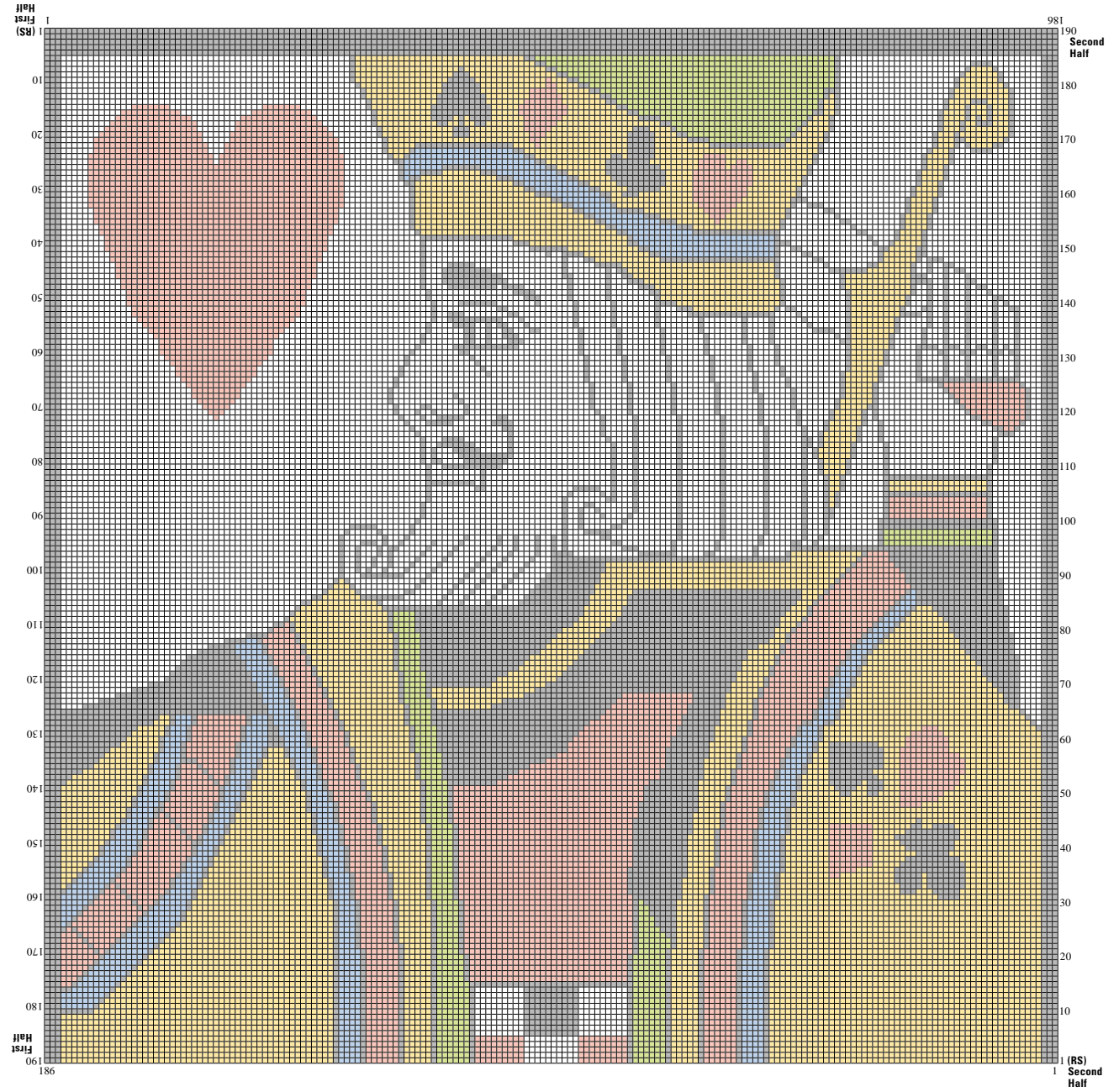


Note: To work main chart, turn upside down and work row 1 to row 190 for first half. Then turn right side up and work row 1 to row 190 for second half. Embroider "K" and small heart in top left corner approx 2"/5cm down from top and 1½"/4cm from side. Work another "K" and heart in mirror image on other half of afghan.

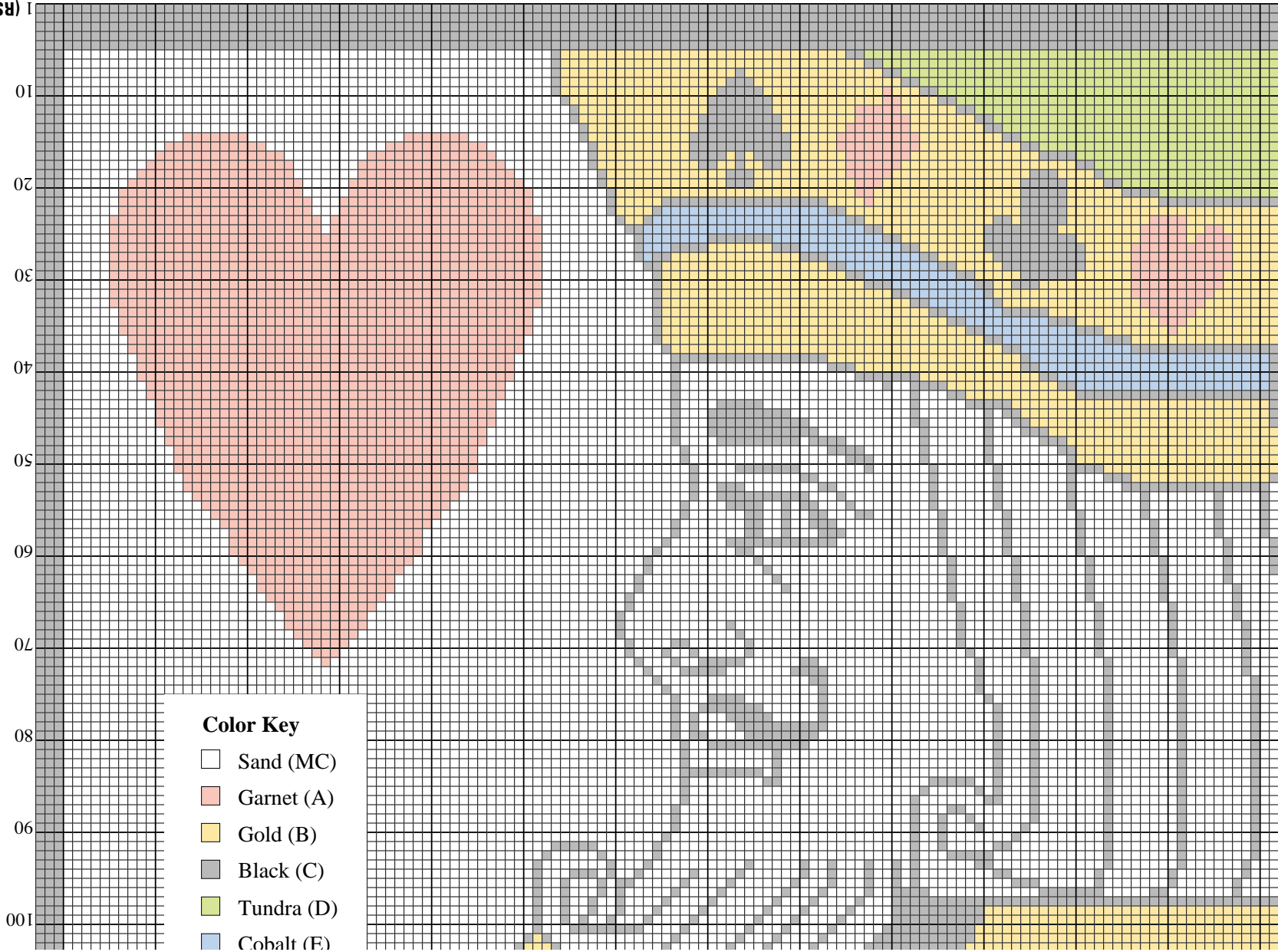


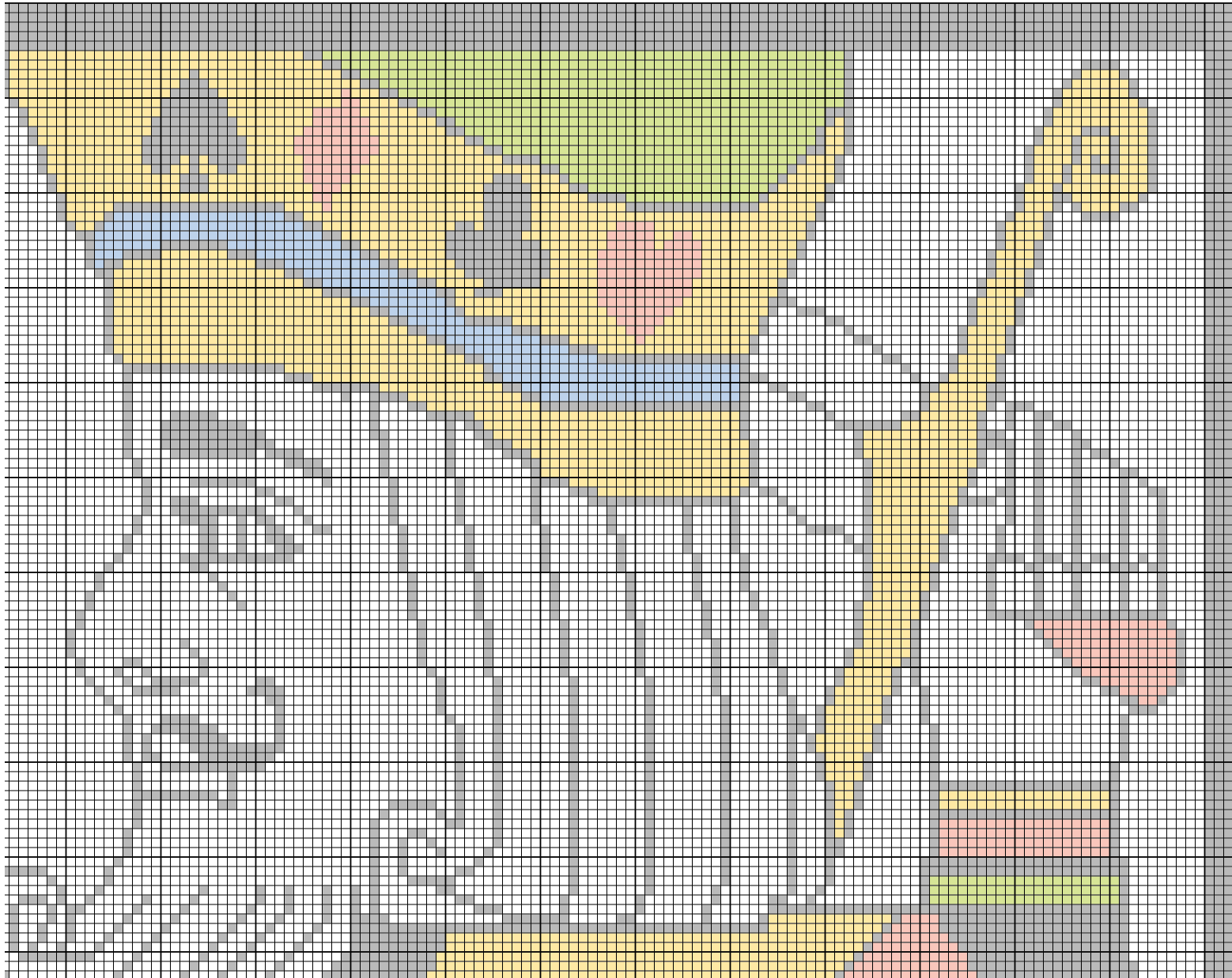
- Color Key**
- Sand (MC)
 - Garnet (A)
 - Gold (B)
 - Black (C)
 - Tundra (D)
 - Cobalt (E)

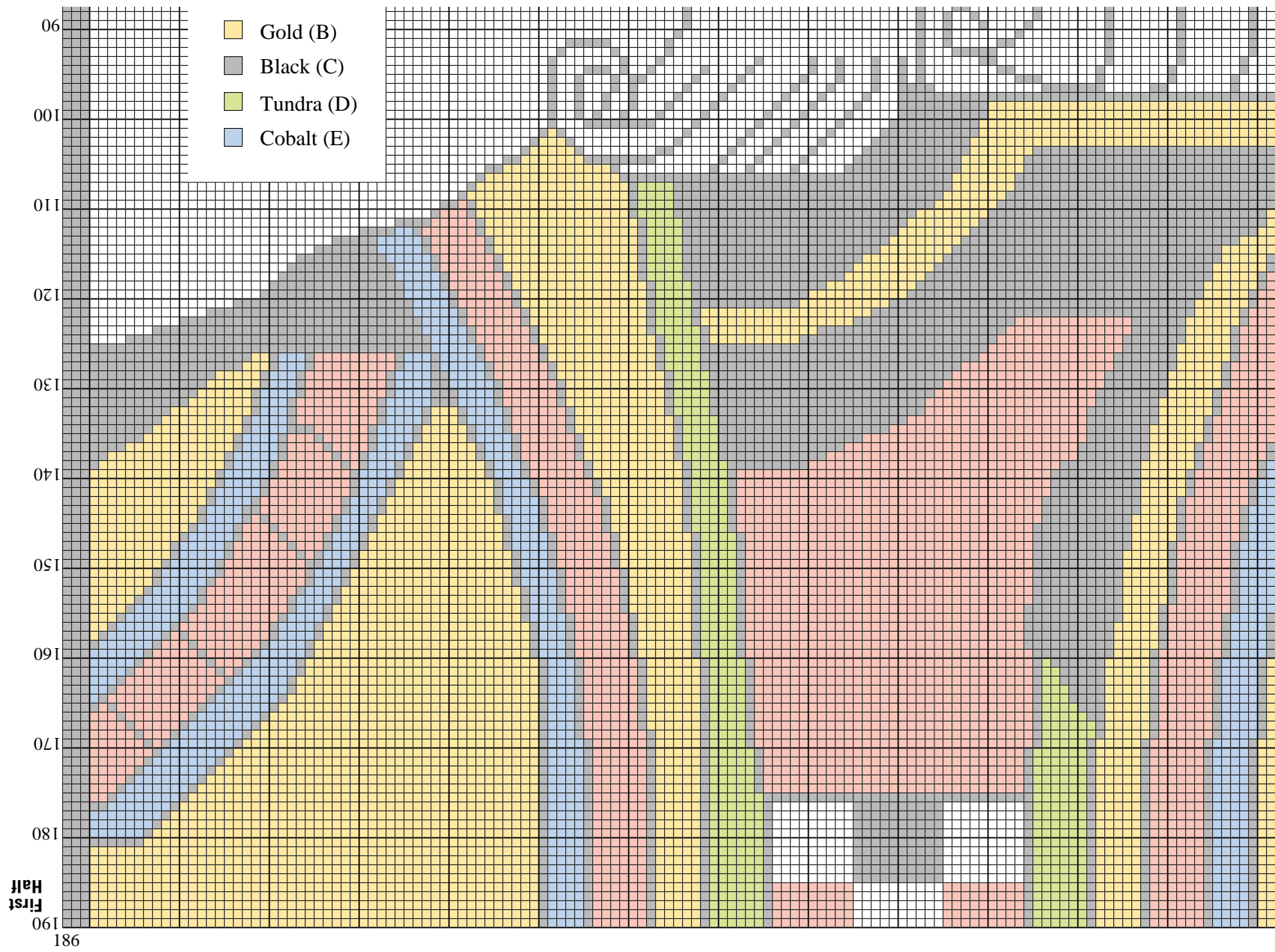


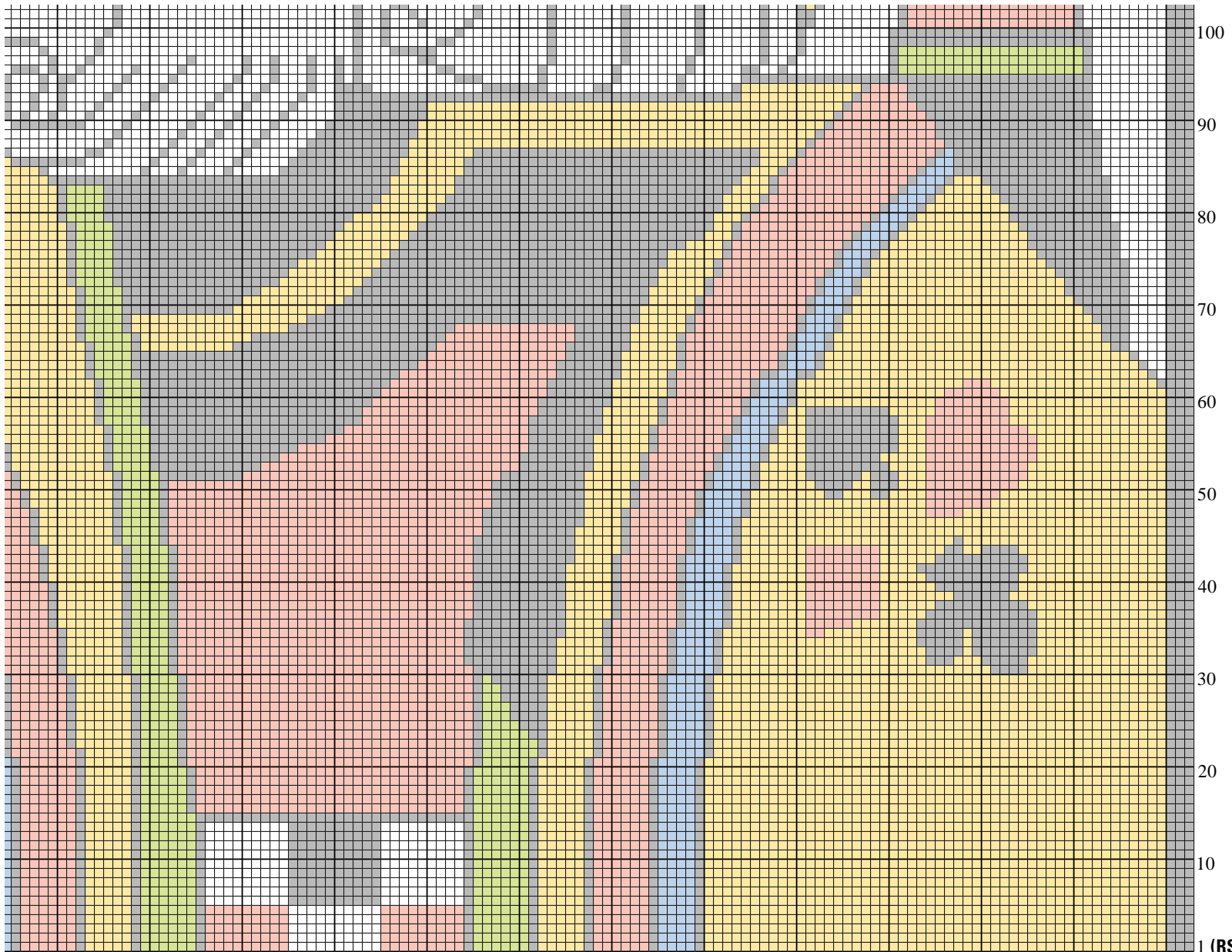
Note: Following pages are reduced 50% from original and tiled (overlapped for clarity).

Half
First
(RS)
1



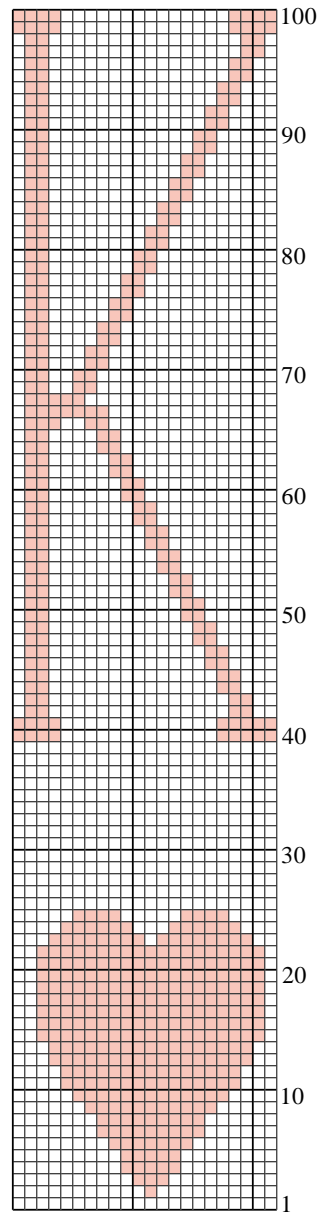






100
90
80
70
60
50
40
30
20
10

1 (RS)
1 Second
Half



22 sts

Note: To work main chart, turn upside down and work row 1 to row 190 for first half. Then turn right side up and work row 1 to row 190 for second half. Embroider “K” and small heart in top left corner approx 2"/5cm down from top and 1 1/2"/4cm from side. Work another “K” and heart in mirror image on other half of afghan.

Color Key

- Sand (MC)
- Garnet (A)
- Gold (B)
- Black (C)
- Tundra (D)
- Cobalt (E)