

ARAN SCARF

Cable connection

For Intermediate Knitters

Smooth flowing center diamond cable crossing panel bordered by ribs, creates a highly textured woven appearance on this casually elegant scarf fashioned in luxurious cashmere.

Designed by Veronica Manno.

KNITTED MEASUREMENTS

■ Approx 7" x 53"/18cm x 134.5cm

MATERIALS

Original Yarn

■ 2 3½oz/100g skeins (each approx 165yd/152m) of Trendsetter Yarns *Dali* (cashmere) in #169 purple (4)

Substitute Yarn

■ 3 1¾oz/50g skeins (each approx 110yd/100m) of Trendsetter Yarns *Kashmir* (cashmere/silk) in #36 periwinkle (4)

Note

The original yarn used for this scarf is no longer available. A comparable substitute has been made, which is available at the time of printing. Check gauge of substitute yarn—very carefully before beginning.

■ One pair size 9 (5.5mm) needles *or size to obtain gauge*

■ Cable needle (cn)

GAUGE

24 sts and 22 rows to 4"/10cm over rib and cable pat foll chart using size 9 (5.5mm) needles.

Take time to check gauge.

STITCH GLOSSARY

4-ST RPC Sl next st to cn and hold to *back*, k next 3 sts, p1 from cn.

4-ST LPC Sl next 3 sts to cn and hold to *front*, p next st, k3 from cn.

6-ST RC Sl next 3 sts to cn and hold to *back*, k next 3 sts, k3 from cn.

6-ST LC Sl next 3 sts to cn and hold to *front*, k next 3 sts, k3 from cn.

SCARF

Cast on 42 sts. Beg with row 1, foll chart through row 6. Then rep rows 7–42 (36-row repeat) a total of 8 times. Then work rows 43–51 once. Bind off in rib.

FINISHING

Block to measurements being sure not to flatten rib.

KNIT SIMPLE, WINTER 2006, FIBER FACTS

Pattern courtesy of Vogue Knitting on the Go!, Scarves Two, Sixth & Spring Books, 2003, pages 64-66



Stitch Key

□ K on RS, p on WS

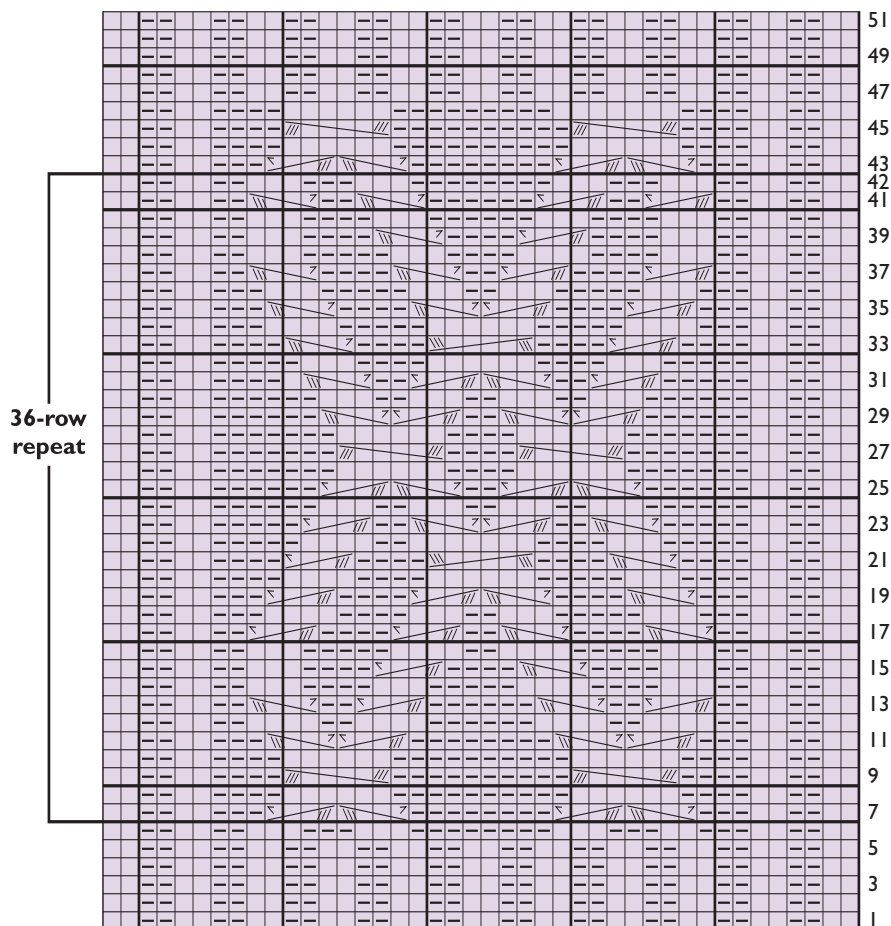
▢ P on RS, k on WS

▤ 4-St RPC

▥ 4-St LPC

▧ 6-St RC

▨ 6-St LC



42 sts