

#12

By Lois Johnson

MATERIALS

Red Heart Super Saver (Economy size) by Coats & Clark, 7oz/198g balls, each approx 364yd/333m (acrylic)

- 1 skein each in #718 shocking pink and #373 petal pink
- One pair size 10 (6mm) needles OR SIZE TO OBTAIN GAUGE

GAUGE

12 sts & 18 rows = 4"/10cm over St st, using size 10 (6mm) needles and one strand of yarn.

TAKE TIME TO CHECK YOUR GAUGE.

SQUARE

With both yarns held tog, cast on 40 sts.

Knit 6 rows.

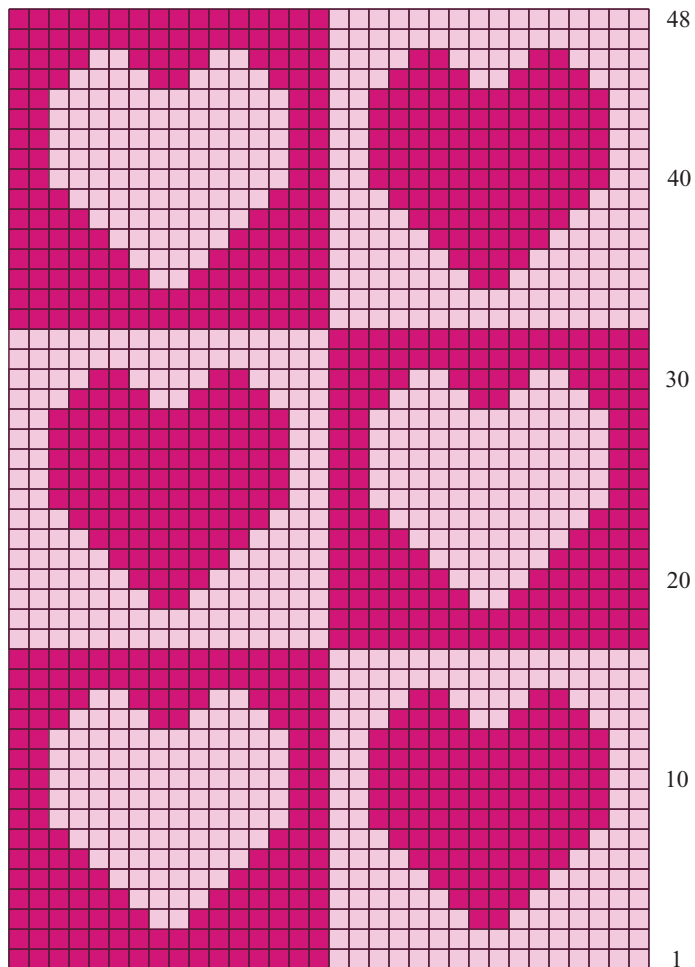
Begin chart

Row 1 (RS) With both strands of yarn held tog k4, then working with one color at a time knit row 1 of chart across next 32 sts twisting yarn on WS to prevent holes at color changes, with both strands of yarn held tog k4.

Row 2 With both strands of yarn held tog k4, then working with one color at a time purl row 2 of chart across next 32 sts twisting yarn on WS to prevent holes at color changes, with both strands of yarn held tog k4.

Cont to follow chart as established until row 48 has been worked.

Bind off. ♥



48

40

30

20

10

1

Color Key

- 373 Petal pink
- 718 Shocking pink

32 sts