

#24 SNOWFLAKE SQUARE

By Gayle Bunn

MATERIALS

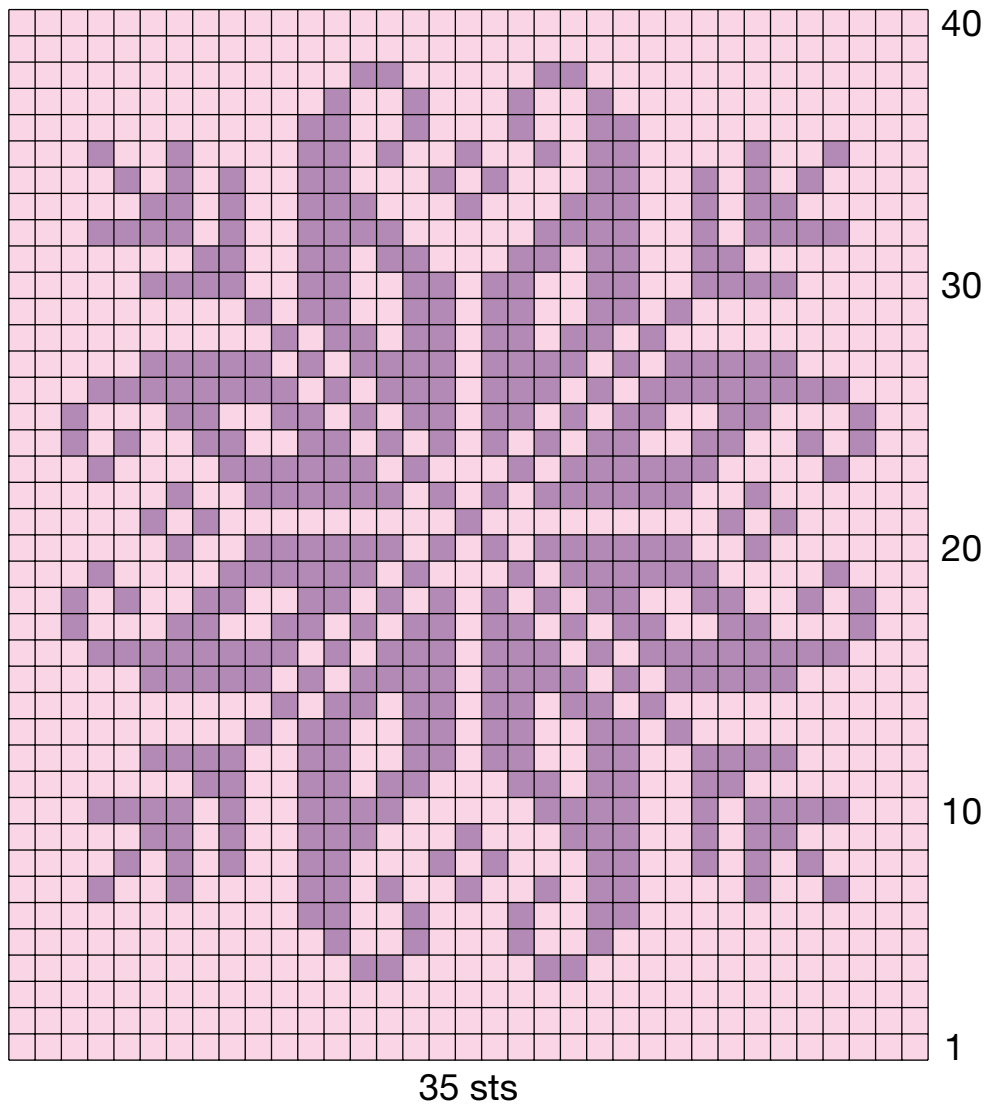
- Pure Merino by Berroco, 1.75oz/50g balls, each approx 92yd/85m (merino wool) in #8567 chintz and #8552 wild berry
- Size 9 (5.5mm) knitting needles OR SIZE TO OBTAIN GAUGE

GAUGE

18 sts & 24 rows = 4" (10 cm) using size 9 (5.5mm) needles over St st.
TAKE TIME TO CHECK YOUR GAUGE

SQUARE

With chintz cast on 35 sts.
Work rows 1–40 of Snowflake chart. Bind off with chintz.



COLOR KEY

- Chintz
- Wild berry