

#22 Turtle Square

By Charlotte Parry

MATERIALS

- Pure Merino by Berroco, 1.75oz/50g balls, each approx 92yd/85m (merino wool) in #8552 wild berry
- Size 9 (5.5mm) knitting needles OR SIZE TO OBTAIN GAUGE
- Cable needle (cn)

GAUGE

18 sts and 24 rows = 4" (10 cm) using size 9 (5.5mm) needles over St st.
TAKE TIME TO CHECK YOUR GAUGE

NOTE

The turtle motif was adapted from Barbara Walkers's *Charted Knitting Designs: A Third Treasury of Knitting Patterns* (Schoolhouse Press), page 128.

STITCH GLOSSARY

2-st LPC Sl 1 st to cn and hold to front, p1, k1 from cn.

2/2 LPC Sl 2 sts to cn and hold to front, p2, k2 from cn.

2/2 RPC Sl 2 sts to cn and hold to back, k2, p2 from cn.

3/1 LPC Sl 3 sts to cn and hold to front, p1, k3 from cn.

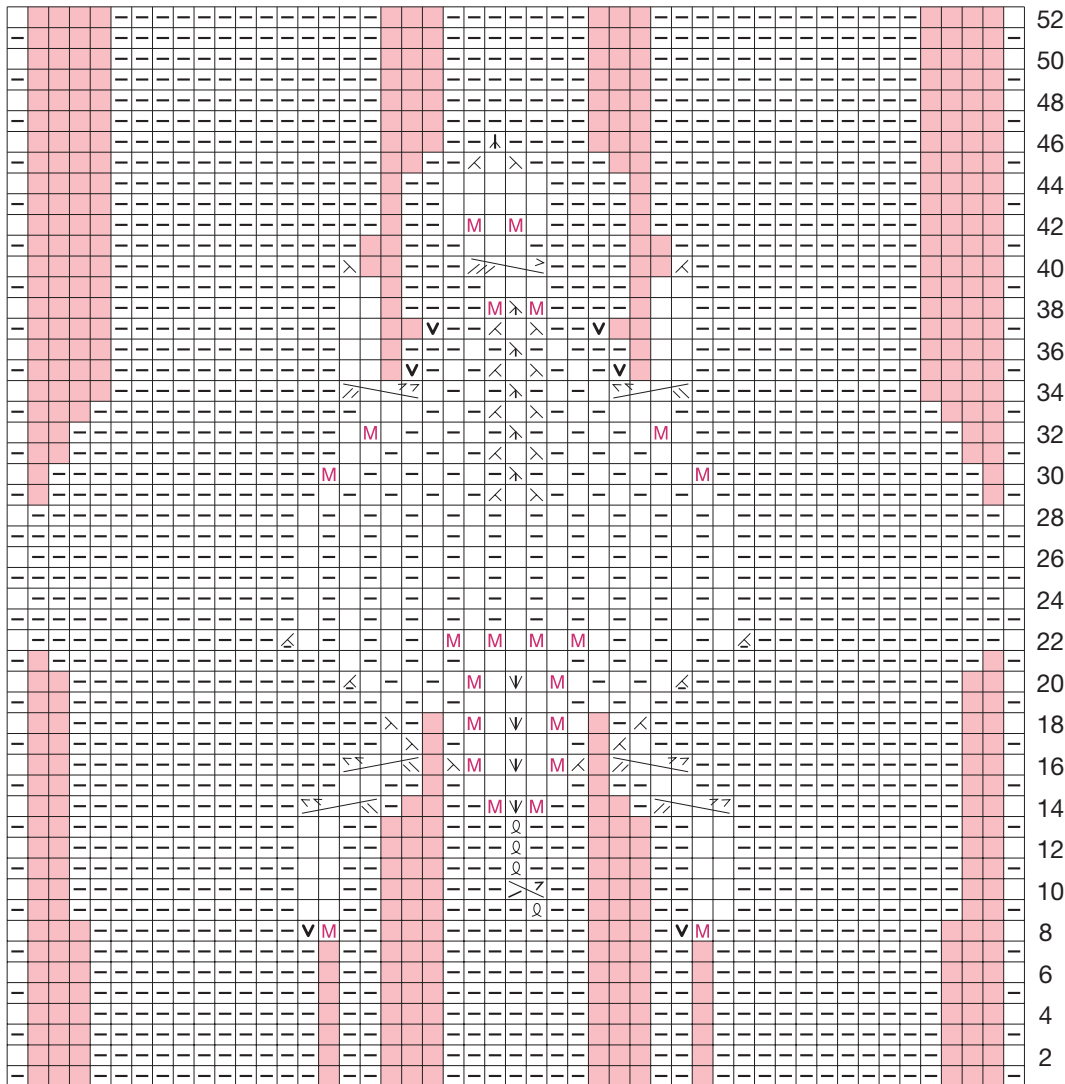
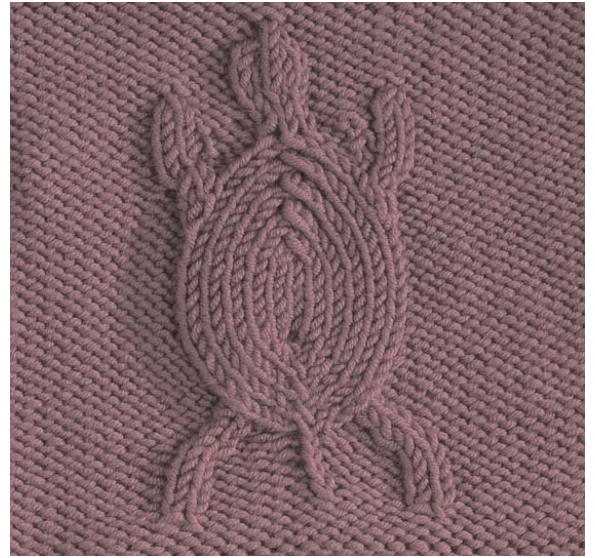
S2KP Slip 2 sts one at a time, k1, pass 2 slipped sts over k1.

SK2P Slip 1, k2 tog, pass slipped st over k2 tog.

Central Double Increase (K1 tbl, k1) in one st, insert LH needle point behind the vertical strand running downward from between the 2 sts just made, k1 tbl into this strand.

SQUARE

With wild berry, cast on 35 sts. Follow turtle chart until row 52 has been worked. Bind off.



35 sts increased to 49 sts

STITCH KEY

- K on RS, p on WS
- P on RS, k on WS
- No stitch
- K tbl on RS, P tbl on WS
- Make 1
- K into front and back of st on RS, p into front and back of st on WS
- K2tog on RS, p2tog tbl on WS
- Ssk on RS, p2tog on WS
- P2tog on RS
- Inc 2
- SK2P
- S2KP
- 2-st LPC
- 3/1 LPC
- 2/2 RPC
- 2/2 LPC