

#19 GEOMETRIC SQUARE

By Maie Landra

MATERIALS

- Pure Merino by Berroco, 1.75oz/50 g balls, each approx 92yd/85m (merino wool) in #8546 teaberry and #8567 chintz
- Size 9 (5.5mm) knitting needles OR SIZE TO OBTAIN GAUGE

GAUGE

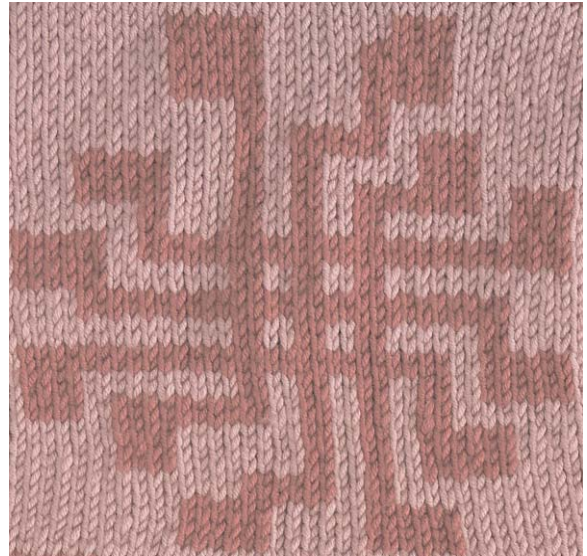
20 sts and 24 rows = 4" (10 cm) using size 9 (5.5mm) needles over St st and chart.

TAKE TIME TO CHECK YOUR GAUGE

SQUARE

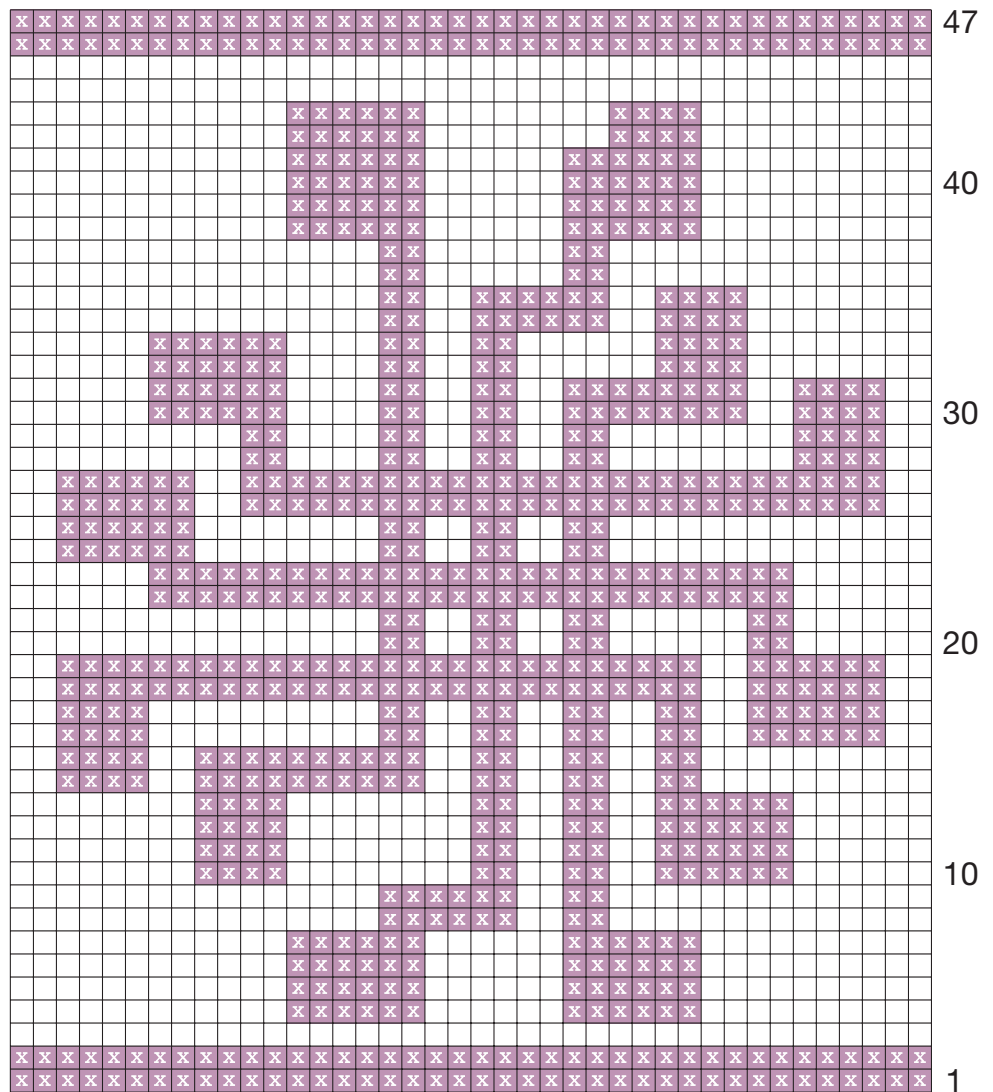
With teaberry. cast on 40 sts.

Work in St st and follow chart through row 47. Bind off with teaberry.



COLOR KEY

- Chintz
- Teaberry



40 sts