

## #15 GIRAFFE SQUARE

By Amy Bahrt

### MATERIALS

- Pure Merino by Berroco, 1.75oz/50g balls, each approx 92yd/85m (merino wool) in #8567 chintz, #8510 wisteria and #8552 wild berry
- Size 9 (5.5mm) knitting needles OR SIZE TO OBTAIN GAUGE
- Size 8-H (5mm) crochet hook
- 1 small button, 3/8"/1cm in diameter
- Sewing needle and thread
- Yarn needle

### GAUGE

18 sts and 25 rows = 4"/10cm over St st using size 9 (5.5mm) knitting needles.

TAKE TIME TO CHECK YOUR GAUGE.

### SQUARE

With wild berry, cast on 36 sts. Work rows 1–51 of chart in St st. Bind off.

### LEGS (make 2)

With wisteria, cast on 5 sts. Knit 4 rows. With chintz, work in St st for 13 rows, bind off. Fold in half lengthwise, sew seam.

### FINISHING

#### Legs

Sew bound-off edge of legs to body as indicated on chart, with seam in back. Sew cast-on edge of legs in place as indicated.

#### Eye

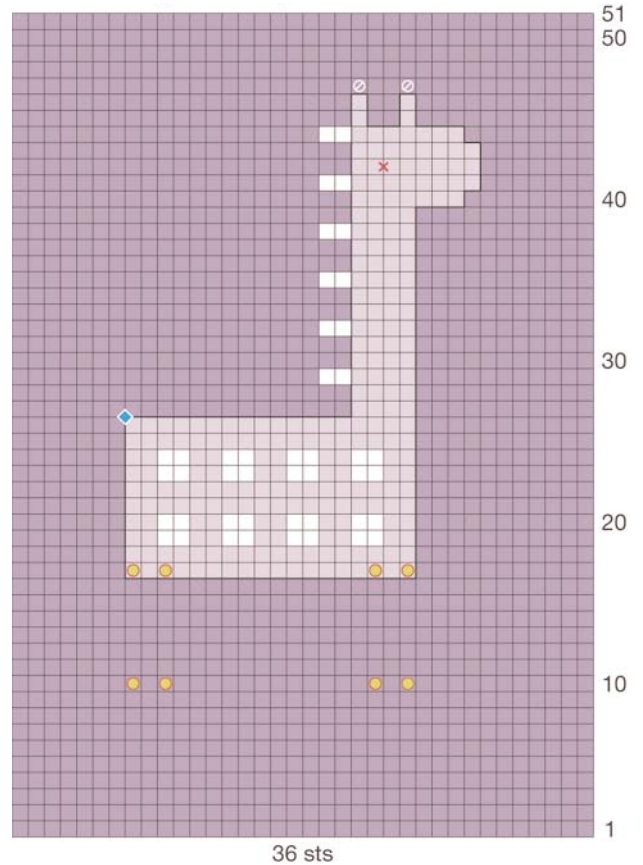
Sew button for eye with needle and thread as indicated on chart.

#### Tail

With crochet hook and chintz, sl st to body as indicated on chart. Ch for 1"/2.5cm. Cut yarn leaving 2"/5cm tail. Pull tail through last ch. Trim to desired length.

#### Horns

With chintz, make French knots as indicated on chart.



## Color & Stitch Key

- |                           |                          |
|---------------------------|--------------------------|
| ■ Wild berry              | ⊗ Eye (button) placement |
| ■ Chintz                  | ◆ Sl st for tail         |
| □ Wisteria                | ● Leg placement          |
| ⊙ French knot with chintz |                          |