

# #13 KNOTTED LATTICE

By Betsy Westman

## MATERIALS

- *Pure Merino* by Berroco, 1.75oz/50g balls, each approx 92yd/85m (merino wool) in #8560 bordeaux
- Size 9 (5.5mm) needles OR SIZE TO OBTAIN GAUGE
- Cable needle

## GAUGE

18 sts & 24 rows = 4"/10 cm using size 9 (5.5mm) needles over St st.  
TAKE TIME TO CHECK YOUR GAUGE..

## NOTE

The Knotted Lattice stitch was adapted from *A Second Treasury of Knitting Patterns* by Barbara Walker (Charles Scribner's Sons), page 206.

## STITCH GLOSSARY

**RT** K2tog leaving sts on LH needle, insert RH needle between the 2 sts just knitted tog and k the first st again, sl both sts from needle.

**3-st RPC** Sl 1 st to cn and hold to *back*, k2, p1 from cn.

**3-st LPC** Sl 2 sts to cn and hold to *front*, p1, k2 from cn.

**4-st RC** Sl 2 sts to cn and hold to *back*, k2, k2 from cn.

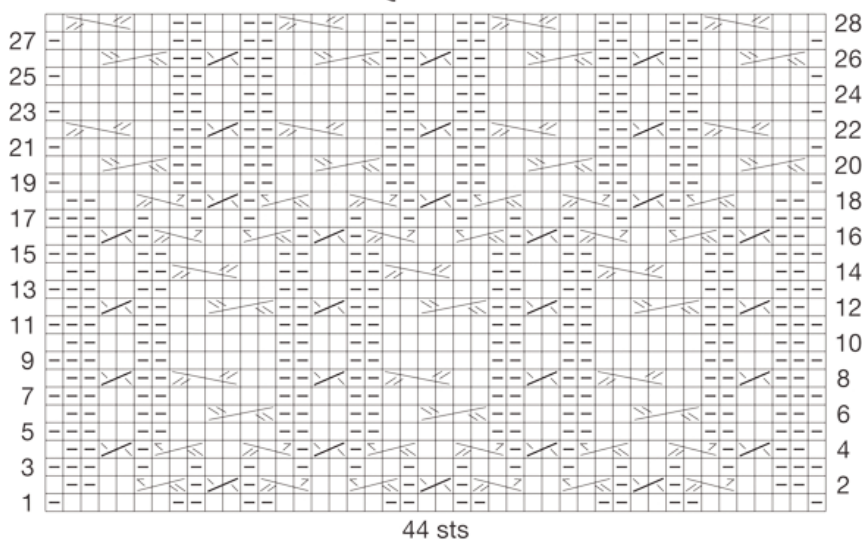
**4-st LC** Sl 2 sts to cn and hold to *front*, k2, k2 from cn.

## SQUARE

With bordeaux, cast on 44 sts. Foll chart, working rows 1–28, then rep rows 1–19 once more. Bind off.



**SQUARE 13**



## STITCH KEY

- |                    |            |           |
|--------------------|------------|-----------|
| □ k on RS, p on WS | ▧ 3-st LPC | ▨ 4-st RC |
| ▩ p on RS, k on WS | ▦ 3-st RPC | ▪ 4-st LC |
| ⊗ RT               |            |           |