

#2 ICELAND'S HALLGRIM'S CHURCH

By Linda Pratt

MATERIALS

- *Pure Merino* by Berroco, 1.75oz/50g balls, each approx 92yd/85m (merino wool) in #8546 teaberry, #8567 chintz, #8560 bordeaux and #8552 wild berry
- Size 9 (5.5mm) knitting needles OR SIZE TO OBTAIN GAUGE

GAUGE

16 sts & 24 rows = 4" (10cm) using size 9 (5.5mm) needles over St st.
TAKE TIME TO CHECK YOUR GAUGE.

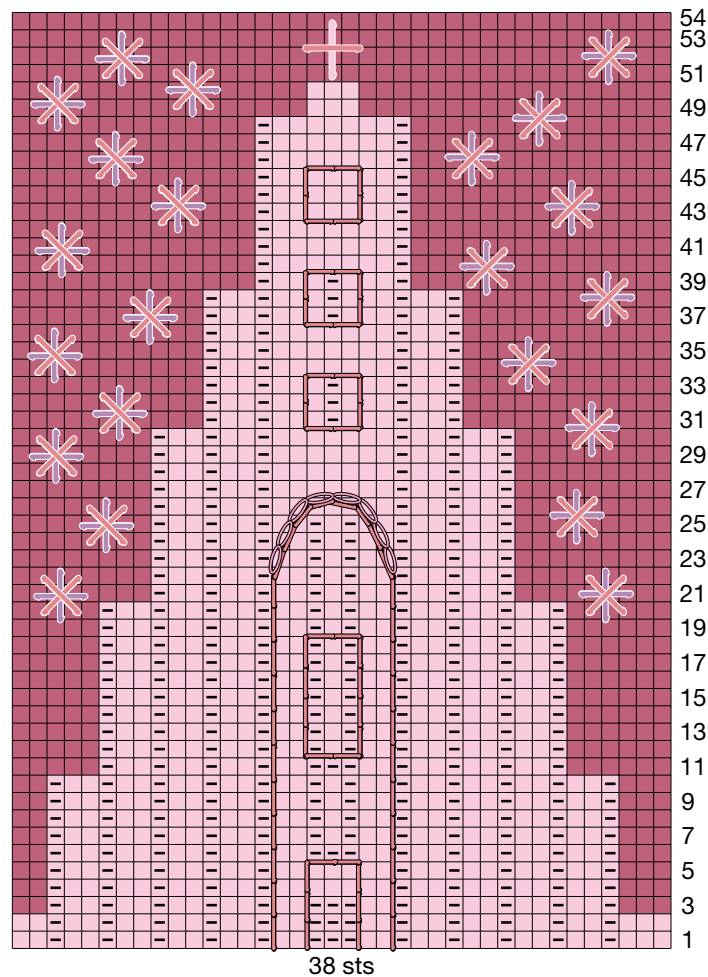
SQUARE

With chintz, cast on 38 sts.

Follow chart for color placement and stitch pattern.

With bordeaux, bind off.

Follow chart to work embroidery, IN ADDITION, work chain st with chintz in 5 purl-st columns on either side of church center.



STITCH KEY

- K on RS, p on WS
- ▣ P on RS, k on WS

COLOR KEY

- Chintz
- Bordeaux

EMBROIDERY KEY

- | Stem st, Teaberry
- Chain st, Chintz
- ✚ Cross st, Chintz & Teaberry
- ✳ Cross st, Teaberry & Wildberry